



Government of India  
Ministry of Earth Sciences



India Meteorological Department

## PRESS RELEASE – 3

Time of issue: 1330 hours IST

Dated: 22<sup>nd</sup> November, 2022

### Sub: Well Marked Low Pressure Area over Westcentral and adjoining Southwest Bay of Bengal off South Andhra Pradesh-North Tamil Nadu coasts

Yesterday's depression over southwest Bay of Bengal (BoB) moved nearly northwestwards till evening (1730 hours IST) of 21<sup>st</sup> November. Thereafter, it moved west-northwestwards and weakened into a well marked low pressure area over Westcentral and adjoining Southwest Bay of Bengal off South Andhra Pradesh-North Tamil Nadu coasts in the morning (0830 hours IST) of today, the 22<sup>nd</sup> November, 2022.

It is likely to move slowly west-northwestwards and weaken further during next 24 hours.

**Realised Rainfall:** Light to moderate rainfall occurred at many places over South Coastal Andhra Pradesh & adjoining areas of North Tamil Nadu and Rayalseema on 21<sup>st</sup> November.

#### Warnings:

##### (i) Rainfall (warning graphics enclosed)

- ❖ Light to moderate rainfall at many places with isolated heavy rainfall is very likely over south coastal Andhra Pradesh on 22<sup>nd</sup> November and light to moderate rainfall at a few places over north Tamil Nadu-Puducherry during the same period.
- ❖ Light to moderate rainfall at few places is likely over North Tamil Nadu-Puducherry, South Coastal Andhra Pradesh and Rayalaseema on 23<sup>rd</sup> November.

##### (ii) Wind warning:

**Squally weather wind speed reaching 40-45 kmph gusting to 55 kmph is likely to prevail** over Westcentral and adjoining Southwest Bay of Bengal and along & off South Andhra Pradesh, Tamil Nadu, Puducherry, Gulf of Mannar and adjoining North Sri Lanka coasts till evening of today and decrease gradually thereafter becoming 30-40 kmph gusting 50 kmph by 23<sup>rd</sup> November morning.

##### (iii) Sea condition

**Sea condition will be rough** over Southwest and adjoining Westcentral Bay of Bengal and along & off south Andhra Pradesh, Tamil Nadu, Puducherry, Gulf of Mannar and North Sri Lanka coasts till evening of today and improve gradually thereafter becoming rough to moderate by 23<sup>rd</sup> November morning.

##### (iv) Fishermen Warning

**Fishermen are advised not to venture into** Southwest and adjoining Westcentral Bay of Bengal and along & off south Andhra Pradesh, Tamil Nadu, Puducherry, Gulf of Mannar and North Sri Lanka coasts on 22<sup>nd</sup> November.

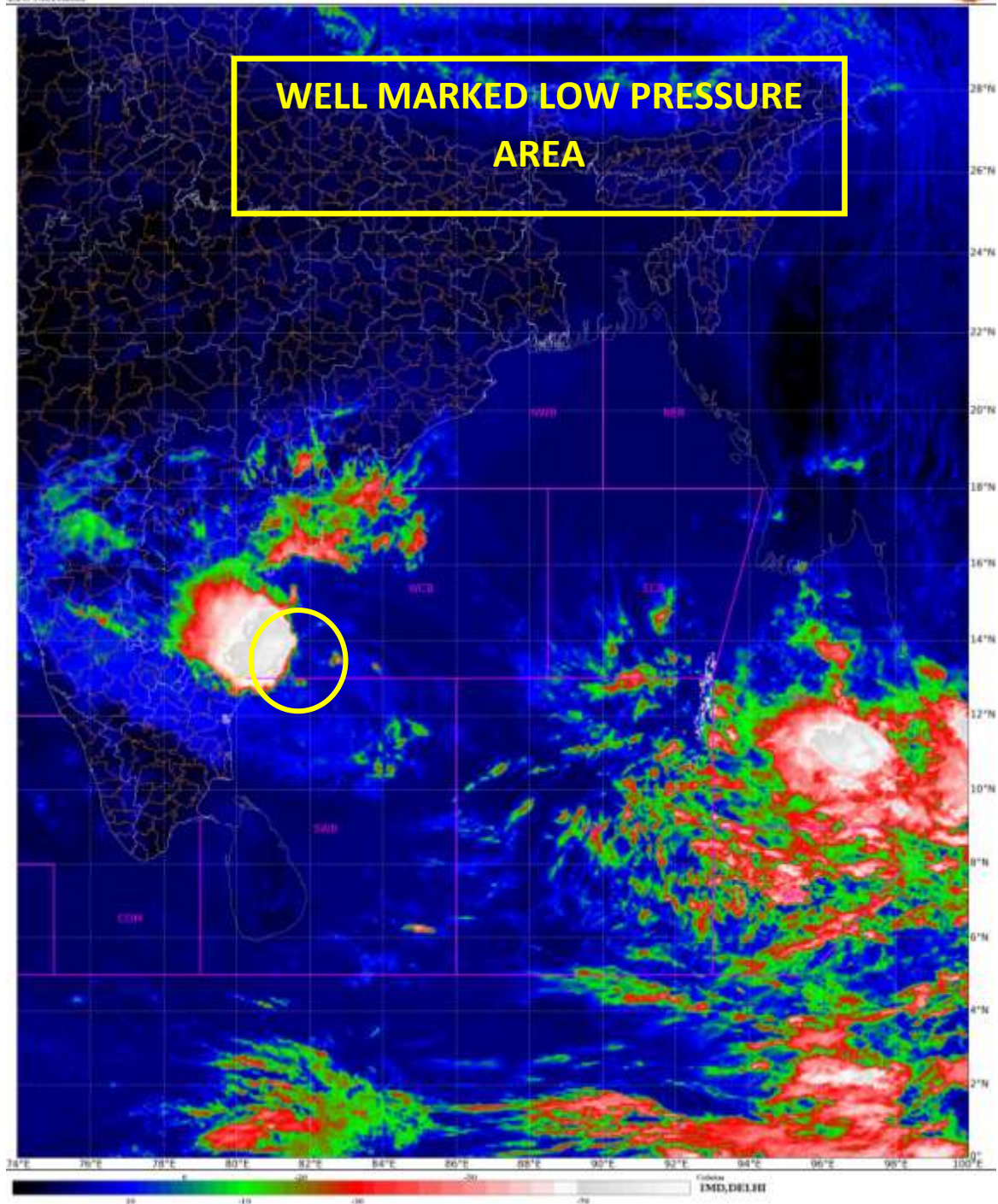
**This is the last Press Release in association with the system. However, regular updates shall continue from National Weather Forecasting Center, ACWC, Chennai/CWC, Vishakhapatnam.**

Contact: Cyclone Warning Division, Office of the Director General of Meteorology,  
India Meteorological Department, Ministry of Earth Sciences.

Phone: (91) 11-24652484, FAX: (91) 11-24643128, 24623220, E-mail: cwdhq2008@gmail.com, Website: [rsmcnewdelhi.imd.gov.in](http://rsmcnewdelhi.imd.gov.in)

Spatial rainfall distribution: Isolated: <25%, A few: 26-50%, Many: 51-75%, Most: 76-100%

Rainfall amount (mm): Heavy rain: 64.5 – 115.5, Very heavy rain: 115.6 – 204.4, Extremely heavy rain: 204.5 or more.



Contact: Cyclone Warning Division, Office of the Director General of Meteorology,  
India Meteorological Department, Ministry of Earth Sciences.

Phone: (91) 11-24652484, FAX: (91) 11-24643128, 24623220, E-mail: [cwdhq2008@gmail.com](mailto:cwdhq2008@gmail.com), Website: [rsmcnewdelhi.imd.gov.in](http://rsmcnewdelhi.imd.gov.in)

Spatial rainfall distribution: Isolated: <25%, A few: 26-50%, Many: 51-75%, Most: 76-100%

Rainfall amount (mm): Heavy rain: 64.5 – 115.5, Very heavy rain: 115.6 – 204.4, Extremely heavy rain: 204.5 or more.



Today  
22/11/2022



Tomorrow  
23/11/2022



24/11/2022



25/11/2022



26/11/2022



Heavy Rain



Heavy Snow



Thunderstorm



Dust Storm



Strong Winds



Visibility



Cyclone



Squall/ Hail



Frost



Cold Wave



Heat Wave



Sea State

Contact: Cyclone Warning Division, Office of the Director General of Meteorology,  
India Meteorological Department, Ministry of Earth Sciences.

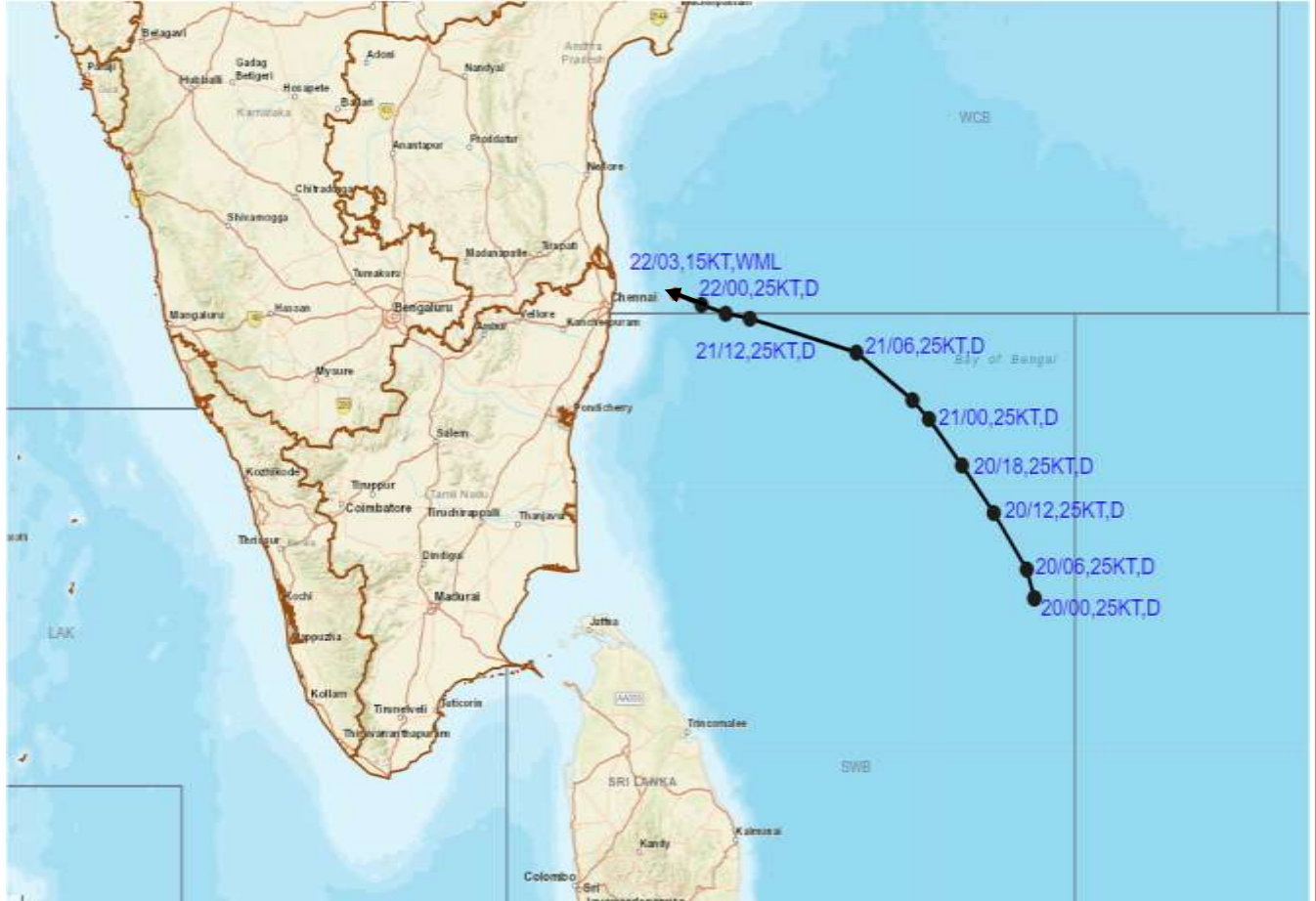
Phone: (91) 11-24652484, FAX: (91) 11-24643128, 24623220, E-mail: [cwdhq2008@gmail.com](mailto:cwdhq2008@gmail.com), Website: [rsmcnewdelhi.imd.gov.in](http://rsmcnewdelhi.imd.gov.in)

Spatial rainfall distribution: Isolated: <25%, A few: 26-50%, Many: 51-75%, Most: 76-100%

Rainfall amount (mm): Heavy rain: 64.5 – 115.5, Very heavy rain: 115.6 – 204.4, Extremely heavy rain: 204.5 or more.



## OBSERVED TRACK OF DEPRESSION OVER BAY OF BENGAL DURING 20<sup>th</sup> – 22<sup>nd</sup> NOVEMBER, 2022



### DATE/TIME IN UTC

IST=UTC + 0530

L: LOW PRESSURE AREA

WML: WELL MARKED LOW PRESSURE AREA

D: DEPRESSION (17-27 KT)

DD: DEEP DEPRESSION (28-33 KT)

CS: CYCLONIC STORM (34-47 KT)

SCS: SEVERE CYCLONIC STORM (48-63KT)

VSCS: VERY SEVERE CYCLONIC STORM (64-89 KT)

ESCS: EXTREMELY SEVERE CYCLONIC STORM (90-119 KT)

SuCS: SUPER CYCLONIC STORM ( $\geq 20$  KT)

● LESS THAN 34 KT

⊖ 34-47 KT

⊖  $\geq 48$  KT

— OBSERVED TRACK

— FORECAST TRACK

▲ CONE OF UNCERTAINTY

Contact: Cyclone Warning Division, Office of the Director General of Meteorology,  
India Meteorological Department, Ministry of Earth Sciences.

Phone: (91) 11-24652484, FAX: (91) 11-24643128, 24623220, E-mail: [cwdhq2008@gmail.com](mailto:cwdhq2008@gmail.com), Website: [rsmcnewdelhi.imd.gov.in](http://rsmcnewdelhi.imd.gov.in)

Spatial rainfall distribution: Isolated: <25%, A few: 26-50%, Many: 51-75%, Most: 76-100%

Rainfall amount (mm): Heavy rain: 64.5 – 115.5, Very heavy rain: 115.6 – 204.4, Extremely heavy rain: 204.5 or more.

## Fishermen warning graphics



**Squally WX with wind speed 40-45 kmph gusting to 55 kmph**

**Fishermen are advised not to venture into the marked areas.**